

Directory

- CHEMPACK Ceramic Random Packing
 - 1 Ceramic Pall Ring 3
 - 2 Ceramic Intalox Ring 4
 - 3 Ceramic Super Saddle Ring 6
 - 4 Ceramic Raschig Ring 8
 - 5 Ceramic Cascade Ring 9
 - 6 Ceramic Cross Partition Ring10

Ceramic Random Packing

Ceramic tower packing are very good mass transfer media and have great advantages of acid-& heat-resistance. It can withstand almost all kinds of acid up to 1000°C except HF acid, and be widely used in the tower of dry, absorbing, cooling, washing and recovery etc, in chemical, petrochemical and metallurgical industry.

Main items/types:

- a. Ceramic Pall Ring (KPK-CPR)
- b. Ceramic Intalox Saddle Ring (KPK-CIS)
- c. Ceramic Supper Saddles (KPK-CSS)
- d. Ceramic Raschig Ring (KPK-CRR)
- e. Ceramic Cascade Ring (KPK-CCR)
- f. Ceramic Cross Partition Ring (KPK-CCPR)

Advantages:

- 1) Excellent performances and stability in acid and other chemical corrosion conditions (acid: 99.8%; alkali: 92%).
- 2) Stable chemical features and low rate of water absorption.
- 3) Can resist high pressure and high temperatures in production procedures.
- 4) Can resist the corrosion of almost all kinds of acids (including organic and inorganic acid, but except HF acid), organic dissolvent, and some alkali.
- 5) Special ceramic packing and has the characteristics of high temperature resistance, corrosion resistance, good mechanical strength.

Application:

Widely used in petrochemical, acid, natural gas, aqueous cleaning, fine chemical, environmental protection, pharmaceutical, fertilizer, and metallurgical plants where they are widely used in the towers of drying, filter, absorbing, cooling, washing, and recovering.

Product design:

If our product standard didn't meet your needs, CHEMPACK is glad to work with your company and design it for your specific application.

Add: Pingxiang high and new technology industry park west zone, Pingxiang city, Jiangxi Pro., P.R.China Zipcode: 337000
Tel: +86-799-6612539 Fax: +86-799-6612513 Mobile: +86-13707994715
Email:info@chemical-packing.com Website: <http://www.chemical-packing.com>
MSN:Aaron.chempack@hotmail.com Skype: youdragon ©Copyright 2007

Ceramic Pall Ring

Product No.: KPK-CPR

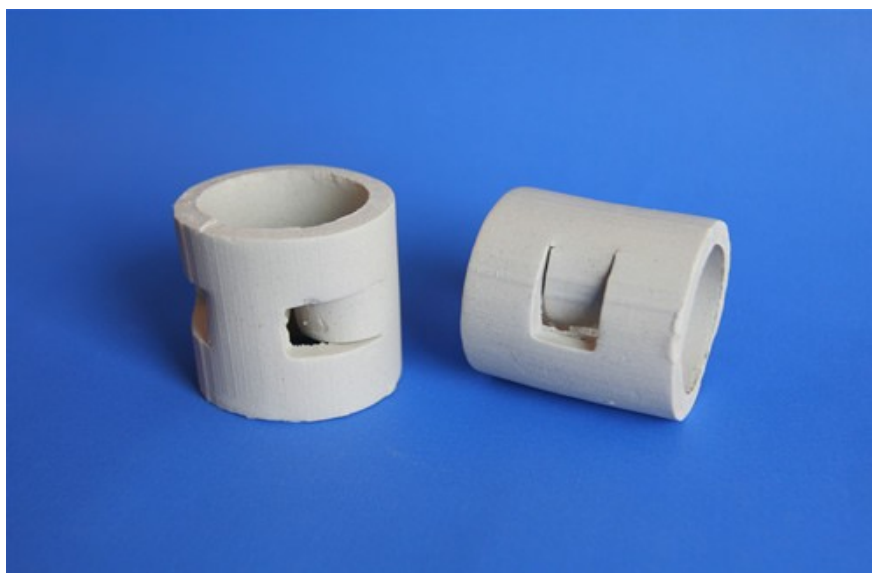


Illustration 1: Ceramic pall ring(KPK-CPR)

As one of the most common and well known tower packing, Ceramic Pall Ring is already an industry standard design media developed from the Raschig Ring and is used widely in all variety of applications. After improving, it opens two rows of window holes with inner tongue sheet on wall of ring. This new structure improves distribution of gas and liquid, adopting inner surface of ring sufficiently. Compared to Raschig Ring, its disposal capacity is increased by up to 50% while pressure is decreased to half of former.

Size & Specification:

Product Name	Size mm	Diameter* Height* Thickness mm	Surface Area m ² /m ³	Void Space %	Bulk Density kg/m ³	Number/ m ³	Packing factor m ⁻¹
Pall ring	Φ25	25×25×3	210	73	630	36000	540
	Φ38	38×38×4	140	75	590	12000	332
	Φ50	50×50×5	100	78	520	4900	210
	Φ76	76×76×9	70	80	470	1500	137

Add: Pingxiang high and new technology industry park west zone, Pingxiang city, Jiangxi Pro., P.R.China Zipcode: 337000

Tel: +86-799-6612539 Fax: +86-799-6612513 Mobile: +86-13707994715

Email: info@chemical-packing.com Website: <http://www.chemical-packing.com>

MSN: Aaron.chempack@hotmail.com Skype: youdragon ©Copyright 2007

Ceramic Intalox Saddle Ring

Product No.: KPK-CIS-A, KPK-CIS-B

Ceramic Saddles are divided into two different types of products according to their properties, KPK-CIS-A is often used in the field of Chemical and Petrochemical industries, and KPK-CIS-B is mainly used in environmental areas such as RTO(Regenerative Thermal Oxidizers) equipment. But both of them are the most frequently used high-performance packing and exhibit advantages for most applications in comparison with other shapes. Their smooth surface imparts a high chemical resistance and provides Ceramic Intalox saddle rings (Ceramic Saddles) with a high level of stability. Due to their simple form, ceramic saddles can be produced at a relatively low cost.



Illustration 2: Ceramic intalox saddle ring(KPK-CIS)

Chemical composition:

SiO ₂	Al ₂ O ₃	Fe ₂ O ₃	CaO	MgO	K ₂ O+Na ₂ O	Other
>73%	17-23%	<1.0%	<0.5%	<0.5%	2-4%	<0.1%

Physical properties:

Index	Value
Specific gravity(g/cm ³)	2.3
Water absorption(%)	<0.3
Acid resistance(%)	>99.6
Max operating temp.(°C)	1100
Porosity(%)	<1
Moh's hardness(scale)	>6.5
Thermal conductivity(w/m.k)	0.9-1.0
Specific heat(j/kg°C)	850-900

Add: Pingxiang high and new technology industry park west zone, Pingxiang city, Jiangxi Pro., P.R.China Zipcode: 337000

Tel: +86-799-6612539 Fax: +86-799-6612513 Mobile: +86-13707994715

Email:info@chemical-packing.com Website: <http://www.chemical-packing.com>

MSN:Aaron.chempack@hotmail.com Skype: youdragon ©Copyright 2007

Size & Specification:

Product Name	Size mm	Diameter* Height* Thickness mm	Surface Area m ² /m ³	Void Space %	Bulk Density kg/m ³	Number/ m ³	Packing factor m ⁻¹
Ceramic Intalox Saddle Ring	Φ16	16×12×2	450	70	710	382000	1311
	Φ25	25×19×3	250	74	610	84000	617
	Φ38	38×30×4	164	75	590	25000	389
	Φ50	50×40×5	142	76	560	9300	323
	Φ76	76×57×9	92	78	520	1800	194

Add: Pingxiang high and new technology industry park west zone, Pingxiang city, Jiangxi Pro.,
P.R.China Zipcode: 337000
Tel: +86-799-6612539 Fax: +86-799-6612513 Mobile: +86-13707994715
Email:info@chemical-packing.com Website: <http://www.chemical-packing.com>
MSN:Aaron.chempack@hotmail.com Skype: youdragon ©Copyright 2007

Ceramic Super Saddle Ring

Product No.: KPK-CSS



Illustration 3: Ceramic Super Saddle Ring(KPK-CSS)

CHEMPACK Ceramic Super Intalox saddles are the most frequently used high-performance packing which exhibit advantages for most applications in comparison with other packing of different shapes. Ceramic super saddles' smooth surface imparts a high chemical resistance and provides them with a high level of stability. Due to their simple form, CHEMPACK Ceramic Super Intalox saddles can be produced at a relatively low cost.

Application:

Widely used in petrochemical, acid, natural gas, aqueous cleaning, fine chemical, environmental protection, pharmaceutical, fertilizer, and metallurgical plants where they are widely used in the towers of drying, filter, absorbing, cooling, washing, and recovering.

Chemical Composition:

SiO ₂	Al ₂ O ₃	SiO ₂ +Al ₂ O ₃	Fe ₂ O ₃	CaO	MgO	K ₂ O+Na ₂ O	Other
>69%	15-23%	>92%	<1%	<0.25%	<0.2%	2-4%	<1%

Add: Pingxiang high and new technology industry park west zone, Pingxiang city, Jiangxi Pro., P.R.China Zipcode: 337000

Tel: +86-799-6612539 Fax: +86-799-6612513 Mobile: +86-13707994715

Email:info@chemical-packing.com Website: <http://www.chemical-packing.com>

MSN:Aaron.chempack@hotmail.com Skype: youdragon ©Copyright 2007

Physical properties:

Index	Value
Porosity(Vol%)	1
Specific heat(KJ/Kg)	840-900
Crush strength(N/mm ²)	390-420
Specific gravity(g/cm ³)	2.3-2.45
Acid resistance(%)	99.98
Firing temperature(°C)	1280 – 1320
Softening temperature(°C)	>1400
Density(Kg/m ³)	2300 – 2400
Water absorption(%)	<0.2
Thermal expansion(10-6mm/mm°C)	4.7
Moh's hardness(Scale)	7 – 8
Comprehensive strength(Newtons)	5600
Shock strength(Kgf.cm/cm ²)	1.0 – 1.5

Size & Specification:

Product Name	Size mm	Diameter* Height* Thickness mm	Surface Area m ² /m ³	Void Space %	Bulk Density kg/m ³	Number / m ³	Packing factor m ⁻¹
Super Intalox Ring	Φ25	25×19×3	160	78	530	52000	337
	Φ38	38×30×4	102	80	480	16000	199
	Φ50	50×40×5	88	81	450	7300	166
	Φ76	76×57×9	58	82	430	1600	105

Add: Pingxiang high and new technology industry park west zone, Pingxiang city, Jiangxi Pro., P.R.China Zipcode: 337000

Tel: +86-799-6612539 Fax: +86-799-6612513 Mobile: +86-13707994715

Email:info@chemical-packing.com Website: <http://www.chemical-packing.com>

MSN:Aaron.chempack@hotmail.com Skype: youdragon ©Copyright 2007

Ceramic Raschig Ring

Product No.: KPK-CRR

In the history of tower packing, raschig ring is the earliest annular packing with fixed geometry shape. It has the following characters: same outer diameter and height, simple structure and low price. But it has problems of asymmetry distribution of liquid and serious phenomena of wall flow and canal flow. Now we usually use corrosion-resistant ceramic raschig ring in acid making industry.

Application:

Raschig Rings have a long history of improving separation efficiency in application including:

1. Petrochemical distillation and extraction application
2. Absorption in gas processing and combustion plants
3. Desorption in water treatment

Size & Specification:

Product Name	Size mm	Diameter *Height *Thickness mm	Surface Area m ² /m ³	Void Space %	Bulk Density kg/m ³	Number /m ³	Packing factor m ⁻¹
Ceramic Raschig Ring	Φ16	16×16×3	250	66	820	178000	870
	Φ25	25×25×3	147	78	510	42000	310
	Φ38	38×38×4	100	80	458	12000	195
	Φ50	50×50×5	80	81	465	5600	156
	Φ76	76×76×9	62	75	575	1700	147



Illustration 4: Ceramic Raschig Ring(KPK-CRR) Large Size



Illustration 5: Ceramic Raschig Ring(KPK-CRR) Small Size

Add: Pingxiang high and new technology industry park west zone, Pingxiang city, Jiangxi Pro., P.R.China Zipcode: 337000

Tel: +86-799-6612539 Fax: +86-799-6612513 Mobile: +86-13707994715

Email:info@chemical-packing.com Website: <http://www.chemical-packing.com>

MSN:Aaron.chempack@hotmail.com Skype: youdragon ©Copyright 2007

Ceramic Cascade Ring

Product NO.: KPK-CCR



Illustration 6: Ceramic Cascade Ring(KPK-CCR)

Cascade ring absorbs advantages of short raschig ring and improves pall ring. Height diameter ratio of the ring is 1:2 and taper rolled edge is added to one end. It reduces resistance when the gas goes through the machine bed and increases flow rate. The intensity of the filling is quite high. Due to its structural characteristics, gas and liquid are distributed evenly and contact area of gas and liquid is increased, thus improving mass transfer efficiency.

Size & Specification:

Product Name	Size mm	Diameter* Height* Thickness mm	Surface Area m ² /m ³	Void Space %	Bulk Density kg/m ³	Number / m ³	Packing factor m ⁻¹
Cascade Ring	Φ25	25×15×3	210	73	650	72000	540
	Φ38	38×23×4	153	74	630	21600	378
	Φ50	50×30×5	102	76	580	9100	232
	Φ76	76×46×9	75	78	530	2500	158

Add: Pingxiang high and new technology industry park west zone, Pingxiang city, Jiangxi Pro., P.R.China Zipcode: 337000

Tel: +86-799-6612539 Fax: +86-799-6612513 Mobile: +86-13707994715

Email:info@chemical-packing.com Website: <http://www.chemical-packing.com>

MSN:Aaron.chempack@hotmail.com Skype: youdragon ©Copyright 2007

Ceramic Cross Partition Ring

Product No.: KPK-CCPR



Illustration 7: Ceramic Cross Partition Ring(KPK-CCPR)

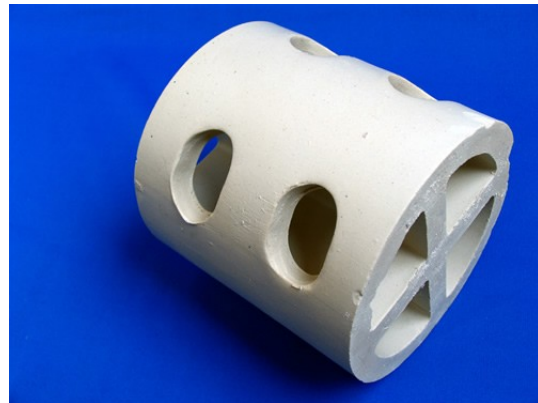


Illustration 8: Ceramic Cross Partition Ring(KPK-CCPR)

Ceramic Cross-partition Ring is improved on the basis of ceramic raschig ring, and the added clapboard inner ring enlarged the surface area and increased crushing strength. It is usually used as the first floor support packing with the advantages of lower crushing strength and less wall flow and canal flow.

Size & Specification:

Product Name	Size mm	Diameter* Height* Thickness mm	Surface Area m ² /m ³	Void Space %	Bulk Density kg/m ³	Number /m ³	Packing factor m ⁻¹
Cross Partition Ring	Φ50	50×50×5	135	50	520	5600	1080
	Φ80	80×80×8	120	53	780	2100-2500	806
	Φ100	100×100×10	110	56	750	900-1000	626
	Φ150	150×150×15	60	58	680	270-300	308

Add: Pingxiang high and new technology industry park west zone, Pingxiang city, Jiangxi Pro., P.R.China Zipcode: 337000

Tel: +86-799-6612539 Fax: +86-799-6612513 Mobile: +86-13707994715

Email: info@chemical-packing.com Website: <http://www.chemical-packing.com>

MSN: Aaron.chempack@hotmail.com Skype: youdragon ©Copyright 2007

Add: Pingxiang high and new technology industry park west zone, Pingxiang city, Jiangxi Pro.,
P.R.China Zipcode: 337000
Tel: +86-799-6612539 Fax: +86-799-6612513 Mobile: +86-13707994715
Email:info@chemical-packing.com Website: <http://www.chemical-packing.com>
MSN:Aaron.chempack@hotmail.com Skype: youdragon ©Copyright 2007